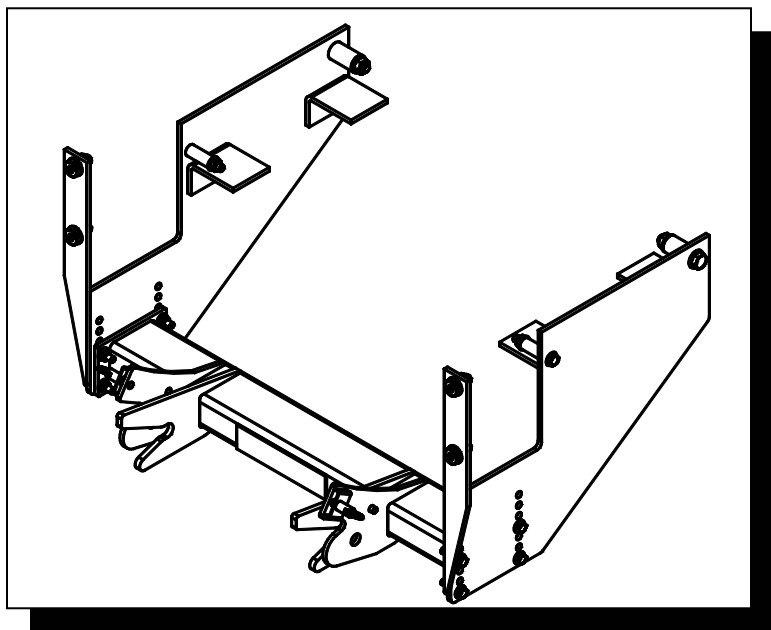


# **BLIZZARD®** **SNOWPLOWS**

## UNDERCARRIAGE INSTALLATION INSTRUCTIONS



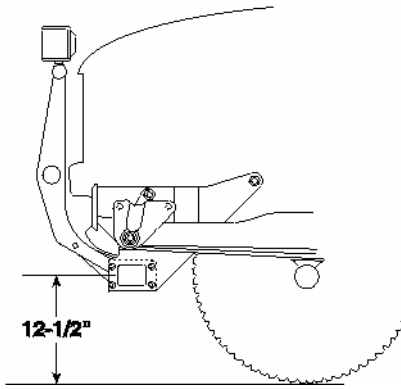
UNDERCARRIAGE **33000**

HARDWARE KIT **61485**

FOR MODELS:

STERLING

## INSTALLATION INSTRUCTIONS



The recommended push beam height for this undercarriage assembly is 12-1/2" from the center of the push beam to level ground. DO NOT exceed 14-1/2" in height for this undercarriage.



**WARNING:** Always perform vehicle undercarriage installations with the keys removed from the vehicle's ignition. Properly tag the ignition switch to alert others work is being performed on the vehicle.

Most newer trucks are equipped with driver and passenger's side air bags. DO NOT remove, disable, or reposition any sensory equipment related to the safe operation of the air bags.

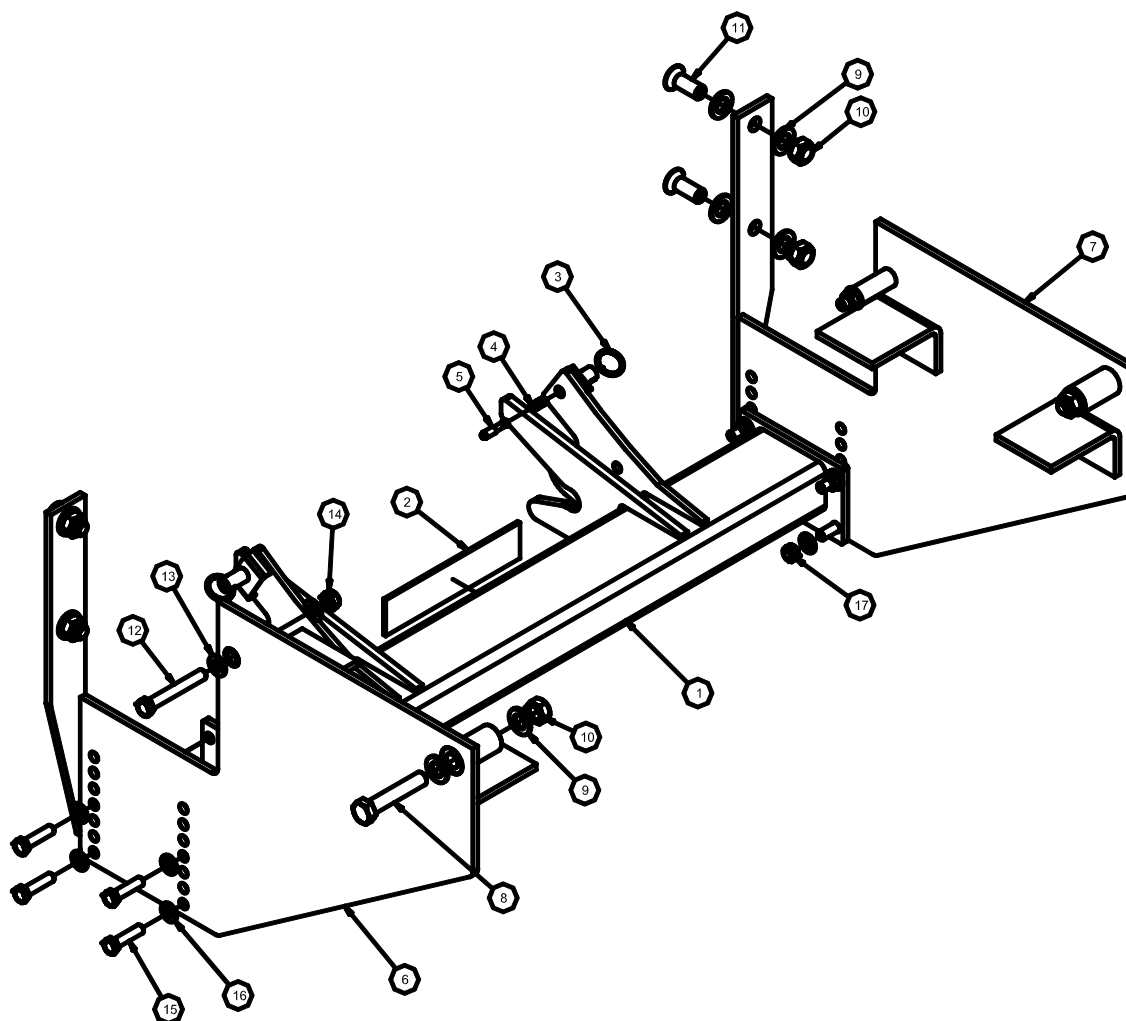
ALWAYS follow the vehicle manufacturer's recommendations for installing snowplowing equipment.

FAILURE TO COMPLY WITH THE ABOVE WARNINGS MAY RESULT IN SERIOUS INJURY OR DEATH.

*NOTE: Actual placement to be determined by installer based on recommended pushbeam height.*

1. Position each hanger plate (**Ref 6 & 7**) on the outside of the truck frame rail. Secure top rear hole with bolts (**Ref 8**), washers (**Ref 9**) and nuts (**Ref 10**). Secure center hole with bolts (**Ref 12**), washers (**Ref 13**) and nuts (**Ref 14**). Secure front vertical supports with bolts (**Ref 11**), washers (**Ref 9**) and nuts (**Ref 10**). Finger tighten the fasteners until all undercarriage parts are in place.
2. Mount the pushbeam (**Ref 1**) square with the bottom of each hanger plate using bolts (**Ref 15**), washers (**Ref 16**) and nuts (**Ref 17**). Torque the pushbeam hardware according to specifications.
3. Level the pushbeam with the floor and tighten the hanger plate hardware to torque specifications
4. Position the **Light Tower** into the mount pockets on the push beam. Each pocket has a lock pin that secures both light tower arms. Pull out and twist each ring handle to temporarily unlock the pins. Place the light tower into the pockets and relock the pins. Mount each **Plow Headlight** to the light tower with the hardware kit provided.
5. Plug the connectors from the snowplow headlights into the connectors on the vehicle wire harness. Adjust both lights with the plow in the raised position.

## UNDERCARRIAGE PARTS



| REF | PN    | QTY | DESCRIPTION                          | NOTES         |
|-----|-------|-----|--------------------------------------|---------------|
| -   | 33000 | 1   | Asm, Undercarriage                   | INCLUDES 1-17 |
| -   | 61485 | 1   | Kit, Hardware UC                     | INCLUDES 8-17 |
| 1   | 33001 | 1   | Weldment, Push Beam 3 X 5 X 39.38    |               |
| 2   | 63161 | 1   | Decal, Pushbeam 2-1/4" x 9-3/4"      |               |
| 3   | 61309 | 2   | Ring, Standard Split, 1.48" O.D      |               |
| 4   | 61000 | 2   | Spring, Draw Latch Lock Pin          |               |
| 5   | 40079 | 2   | Pin, 3/8" DIA. x 1-3/4" SS           |               |
| 6   | 33004 | 1   | Wldmt, Driver's Side Hanger Plate    |               |
| 7   | 33005 | 1   | Wldmt, Passenger's Side Hanger Plate |               |
| 8   | 61200 | 2   | Screw, 3/4-10 UNC x 4                |               |
| 9   | 61304 | 12  | Washer, 3/4" SAE Hardened            |               |
| 10  | 61006 | 6   | Nut, 3/4-10 Hex Top Lock             |               |
| 11  | 61399 | 4   | Screw, 3/4-10 UNC x 2 Flat Head      |               |
| 12  | 61371 | 2   | Screw, 9/16-12 UNC x 4               |               |
| 13  | 61059 | 4   | Washer, 9/16" SAE Hardened           |               |
| 14  | 61058 | 2   | Nut, 9/16-12 Hex Top Lock            |               |
| 15  | 61018 | 8   | Screw, 1/2-13 UNC x 2 HHCS           |               |
| 16  | 61026 | 16  | Washer, 1/2" SAE Hardened            |               |
| 17  | 61020 | 8   | Nut, 1/2-13 Hex Top Lock             |               |

*Note: The reference numbers listed identify parts shown in the illustration above. These numbers are specific to this illustration only. Always review the part number given for proper component identification. Blizzard reserves the right, under its Continuous Improvement Policy, to change construction or design details and furnish equipment when so altered without reference to illustrations or specifications.*

## HEADLIGHT CONVERSION HARNESS GUIDE

| VEHICLE APPLICATION | HEADLIGHT CONNECTOR | HEADLIGHT DESCRIPTION           | HEADLIGHT NUMBERS | CONVERSION HARNESS |
|---------------------|---------------------|---------------------------------|-------------------|--------------------|
| STERLING            | 2B/2D               | DUAL<br>RECTANGULAR<br>HEADLAMP | H6054, HP6054     | 62220              |

*Note: Headlight conversion harness kits are not included with undercarriages. All headlight conversion harness kits sold separately.*

### TORQUE SPECIFICATIONS (For reference only)



Grade Identification Marking for J429-Grade 5 Bolt



Grade Identification Marking for J429-Grade 8 Bolt

| Nominal Thread Size | SAE J429 – Grade 5 |                   |            | Nominal Thread Size | SAE J429 – Grade 8 |                   |            |
|---------------------|--------------------|-------------------|------------|---------------------|--------------------|-------------------|------------|
|                     | Clamp Loads (lbs)  | Tightening Torque |            |                     | Clamp Loads (lbs)  | Tightening Torque |            |
|                     |                    | “Lubricated”      | “Dry”      |                     |                    | “Lubricated”      | “Dry”      |
| 1/4-20              | 2,000              | 6 ft-lbs          | 8 ft-lbs   | 1/4-20              | 2,850              | 9 ft-lbs          | 12 ft-lbs  |
| 5/16-18             | 3,350              | 13 ft-lbs         | 18 ft-lbs  | 5/16-18             | 4,700              | 18 ft-lbs         | 25 ft-lbs  |
| 3/8-16              | 4,950              | 23 ft-lbs         | 31 ft-lbs  | 3/8-16              | 6,950              | 32 ft-lbs         | 44 ft-lbs  |
| 7/16-14             | 6,800              | 37 ft-lbs         | 50 ft-lbs  | 7/16-14             | 9,600              | 53 ft-lbs         | 70 ft-lbs  |
| 1/2-13              | 9,050              | 57 ft-lbs         | 75 ft-lbs  | 1/2-13              | 12,800             | 80 ft-lbs         | 107 ft-lbs |
| 9/16-12             | 11,600             | 82 ft-lbs         | 109 ft-lbs | 9/16-12             | 16,400             | 115 ft-lbs        | 154 ft-lbs |
| 5/8-11              | 14,500             | 113 ft-lbs        | 151 ft-lbs | 5/8-11              | 20,300             | 159 ft-lbs        | 211 ft-lbs |
| 3/4-10              | 21,300             | 200 ft-lbs        | 266 ft-lbs | 3/4-10              | 30,100             | 282 ft-lbs        | 376 ft-lbs |
| 7/8-9               | 29,435             | 321 ft-lbs        | 430 ft-lbs | 7/8-9               | 41,550             | 454 ft-lbs        | 606 ft-lbs |
| 1-8                 | 38,600             | 482 ft-lbs        | 640 ft-lbs | 1-8                 | 54,540             | 680 ft-lbs        | 900 ft-lbs |



Grade Identification Marking for Metric-Grade 8.8 Bolt



Grade Identification Marking for Metric-Grade 10.9 Bolt

| Grade Identification Markings for Metric Class 8.8 Bolt |                         |                   |            | Grade Identification Markings for Metric Class 10.9 Bolt |                         |                   |            |
|---|-------------------------|-------------------|------------|--|-------------------------|-------------------|------------|
| Diameter<br>(mm)  | Metric Class 8.8        |                   |            | Diameter<br>(mm)   | Metric Class 10.9       |                   |            |
|   | Clamp Loads<br>(Pounds) | Tightening Torque |            |  | Clamp Loads<br>(Pounds) | Tightening Torque |            |
|   |                         | “Lubricated”      | “Dry”      |  |                         | “Lubricated”      | “Dry”      |
| 5   | 1,389                   | 3 ft-lbs          | 5 ft-lbs   | 5  | 1,987                   | 5 ft-lbs          | 7 ft-lbs   |
| 6   | 1,965                   | 6 ft-lbs          | 8 ft-lbs   | 6  | 2,812                   | 8 ft-lbs          | 11 ft-lbs  |
| 7   | 2,826                   | 10 ft-lbs         | 13 ft-lbs  | 7  | 4,044                   | 14 ft-lbs         | 19 ft-lbs  |
| 8   | 3,579                   | 14 ft-lbs         | 19 ft-lbs  | 8  | 5,121                   | 20 ft-lbs         | 27 ft-lbs  |
| 10  | 5,672                   | 28 ft-lbs         | 37 ft-lbs  | 10   | 8,116                   | 40 ft-lbs         | 53 ft-lbs  |
| 12  | 8,243                   | 49 ft-lbs         | 65 ft-lbs  | 12   | 11,796                  | 70 ft-lbs         | 92 ft-lbs  |
| 14  | 11,246                  | 77 ft-lbs         | 103 ft-lbs | 14   | 16,092                  | 111 ft-lbs        | 148 ft-lbs |
| 16  | 15,882                  | 125 ft-lbs        | 167 ft-lbs | 16   | 21,970                  | 173 ft-lbs        | 231 ft-lbs |
| 18  | 19,423                  | 172 ft-lbs        | 229 ft-lbs | 18   | 26,868                  | 238 ft-lbs        | 317 ft-lbs |
| 20  | 24,784                  | 244 ft-lbs        | 325 ft-lbs | 20   | 34,284                  | 338 ft-lbs        | 450 ft-lbs |