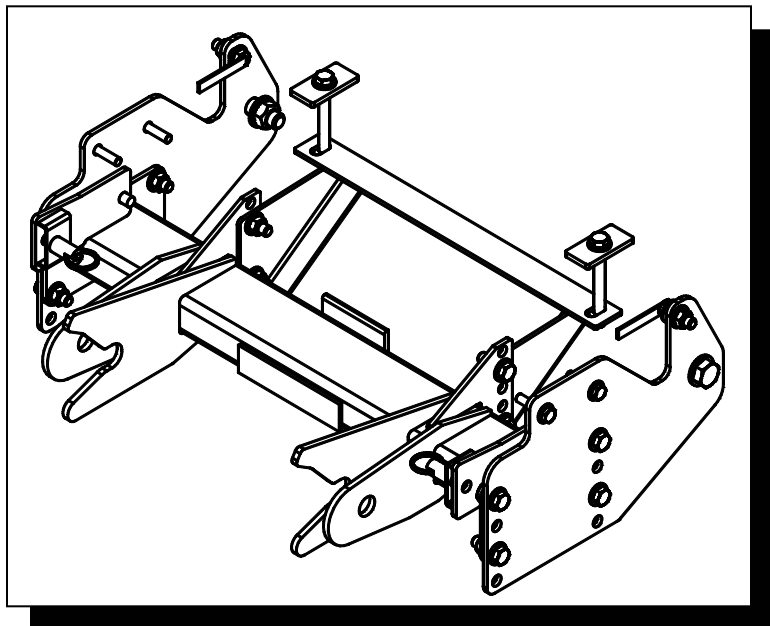


# **BLIZZARD®** **SNOWPLOWS**

## UNDERCARRIAGE INSTALLATION INSTRUCTIONS



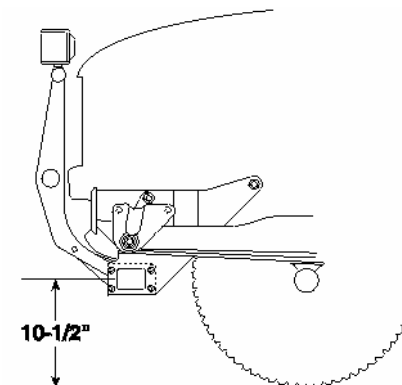
UNDERCARRIAGE **35028**

HARDWARE KIT **61486**

FOR MODELS:

NISSAN FRONTIER (1998-2004)

## INSTALLATION INSTRUCTIONS



The recommended push beam height for this undercarriage assembly is 10-1/2" from the center of the push beam to level ground. DO NOT exceed 12-1/2" in height for this undercarriage.



**WARNING:** Always perform vehicle undercarriage installations with the keys removed from the vehicle's ignition. Properly tag the ignition switch to alert others work is being performed on the vehicle.

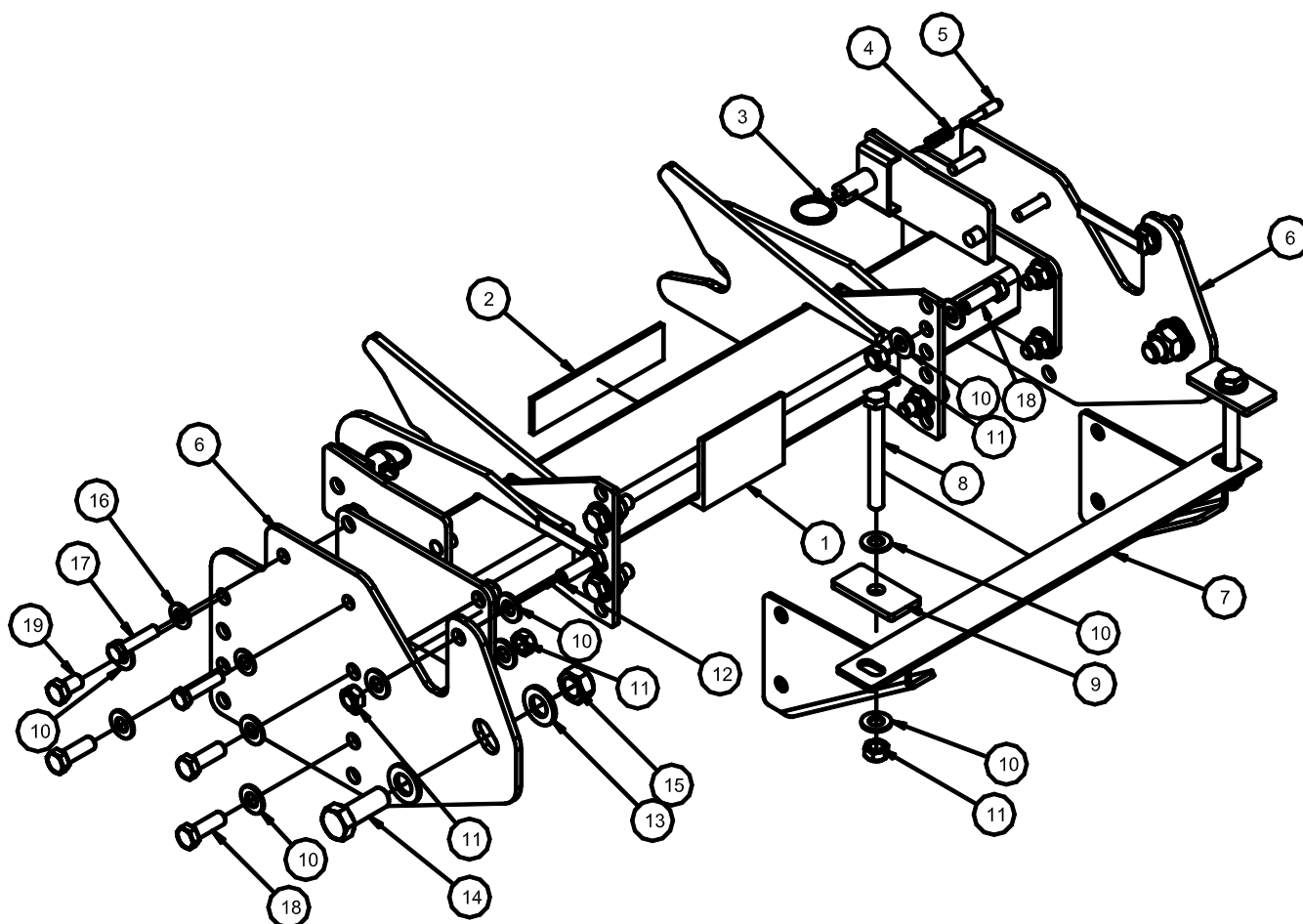
Most newer trucks are equipped with driver and passenger's side air bags. DO NOT remove, disable, or reposition any sensory equipment related to the safe operation of the air bags.

**ALWAYS** follow the vehicle manufacturer's recommendations for installing snowplowing equipment.

**FAILURE TO COMPLY WITH THE ABOVE WARNINGS MAY RESULT IN SERIOUS INJURY OR DEATH.**

1. Remove the bumper support brackets from the outside of the truck frame. Discard original hardware.
2. Using the access holes in the truck frame under the vehicle body mount, position tabbolts (**Ref 12**) inside each side of the frame. Position the top, rear hole on the hanger plates (**Ref 6**) over the bolts and secure with washers (**Ref 10**) and nuts (**Ref 11**). *NOTE: Use a stiff wire to hold the bolt in position.* Finger tighten the fasteners until all undercarriage parts are in place.
3. Align the two top holes in the hanger plates with the bumper support mount holes in the frame. Position the bumper support brackets over the hanger plates and secure them with bolts (**Ref 17**) and washers (**Ref 16**). *NOTE: Each hole contains a welded nut on the inside of the truck frame rail.*
4. Secure the bottom of the hanger plates to the vehicle tie down brackets with bolts (**Ref 14**), washers (**Ref 13**) and nuts (**Ref 15**).
5. Align the holes in the pushbeam support arm (**Ref 7**) with the holes in the bottom of the vehicle crossmember. Position frame reinforcement plates (**Ref 9**) over the top of each crossmember support hole and secure arm and plates with bolts (**Ref 8**), washers (**Ref 10**) and nuts (**Ref 11**).
6. Mount the pushbeam (**Ref 1**) square with the bottom of each hanger plate using bolts (**Ref 18**), washers (**Ref 10**) and nuts (**Ref 11**). The front, upper pushbeam mount holes will use bolts (**Ref 19**), washers (**Ref 10**) and nuts (**Ref 20**) Torque the pushbeam hardware according to specifications.
7. Secure the support arm to the pushbeam with bolts (**Ref 18**), washers (**Ref 10**) and nuts (**Ref 11**).
8. Level the pushbeam with the floor and tighten the hanger plate hardware according to torque specifications
9. Position the **Light Tower** into the mount pockets on the push beam. Each pocket has a lock pin that secures both light tower arms. Pull out and twist each ring handle to temporarily unlock the pins. Place the light tower into the pockets and relock the pins. Mount each **Plow Headlight** to the light tower with the hardware kit provided.
10. Plug the connectors from the snowplow headlights into the connectors on the vehicle wire harness. Adjust both lights with the plow in the raised position.

## UNDERCARRIAGE PARTS



REF	PN	QTY	DESCRIPTION	NOTES
-	35028	1	Asm, Undercarriage	INCLUDES 1-20
-	61486	1	Kit, Hardware UC	INCLUDES 8-20
1	35029	1	Weldment, Push Beam 2 X 4 X 28.50	
2	63162	1	Decal, Pushbeam 1-1/2" x 6-1/2"	
3	61309	2	Ring, Standard Split, 1.48" O.D	
4	61000	2	Spring, Draw Latch Lock Pin	
5	40079	2	Pin, 3/8" DIA. x 1-3/4" SS	
6	35031	2	Plate, Hanger	
7	35035	1	Support Arm, Pushbeam Weldment	
8	61152	2	Screw, 1/2-13 x 4-1/2 HHCS GR8 YZ	
9	35042	2	Plate, Frame Reinforcement	
10	61026	30	Washer, 1/2" SAE Hardened	
11	61020	14	Nut, 1/2-13 Top Lock Z	
12	61151	2	Tabbolt, 1/2-13 x 1-1/2 HHCS GR8 YZ w/ welded tab	
13	61304	4	Washer, 3/4" SAE Hardened	
14	61488	2	Screw, 3/4-10 x 2 HHCS GR8 YZ	
15	61006	2	Nut, 3/4-10 Top Lock Z	
16	61162	4	Washer, 7/16" SAE Hardened	
17	61491	4	Screw, M10-1.25 x 45 HHCS GR8.8 Z	
18	61055	10	Screw, 1/2-13 x 1-1/2 HHCS GR8 YZ	
19	61489	2	Screw, 1/2-13 x 7/8 HHCS GR8 YZ	
20	61490	2	Nut, 1/2-13 Heavy Hex Jam Z	

Note: The reference numbers listed identify parts shown in the illustration above. These numbers are specific to this illustration only. Always review the part number given for proper component identification. Blizzard reserves the right, under its Continuous Improvement Policy, to change construction or design details and furnish equipment when so altered without reference to illustrations or specifications.

## HEADLIGHT CONVERSION HARNESS GUIDE

VEHICLE APPLICATION	HEADLIGHT CONNECTOR	HEADLIGHT DESCRIPTION	HEADLIGHT NUMBERS	CONVERSION HARNESS
2001-2004 NISSAN FRONTIER	HB5	DUAL RECTANGULAR COMPOSITE HALOGEN	9007, H9007	62222
1998-2000 NISSAN FRONTIER	2B/2D	DUAL RECTANGULAR HEADLAMP	H6054, HP6054	62220
	HB1	DUAL RECTANGULAR COMPOSITE HALOGEN	9004, H9004	62221

Note: Headlight conversion harness kits are not included with undercarriages. All headlight conversion harness kits sold separately.

## TORQUE SPECIFICATIONS (For reference only)



Grade Identification Marking for J429-Grade 5 Bolt



Grade Identification Marking for J429-Grade 8 Bolt

Nominal Thread Size	SAE J429 – Grade 5			Nominal Thread Size	SAE J429 – Grade 8		
	Clamp Loads (lbs)	Tightening Torque			Clamp Loads (lbs)	Tightening Torque	
		“Lubricated”	“Dry”			“Lubricated”	“Dry”
1/4-20	2,000	6 ft-lbs	8 ft-lbs	1/4-20	2,850	9 ft-lbs	12 ft-lbs
5/16-18	3,350	13 ft-lbs	18 ft-lbs	5/16-18	4,700	18 ft-lbs	25 ft-lbs
3/8-16	4,950	23 ft-lbs	31 ft-lbs	3/8-16	6,950	32 ft-lbs	44 ft-lbs
7/16-14	6,800	37 ft-lbs	50 ft-lbs	7/16-14	9,600	53 ft-lbs	70 ft-lbs
1/2-13	9,050	57 ft-lbs	75 ft-lbs	1/2-13	12,800	80 ft-lbs	107 ft-lbs
9/16-12	11,600	82 ft-lbs	109 ft-lbs	9/16-12	16,400	115 ft-lbs	154 ft-lbs
5/8-11	14,500	113 ft-lbs	151 ft-lbs	5/8-11	20,300	159 ft-lbs	211 ft-lbs
3/4-10	21,300	200 ft-lbs	266 ft-lbs	3/4-10	30,100	282 ft-lbs	376 ft-lbs
7/8-9	29,435	321 ft-lbs	430 ft-lbs	7/8-9	41,550	454 ft-lbs	606 ft-lbs
1-8	38,600	482 ft-lbs	640 ft-lbs	1-8	54,540	680 ft-lbs	900 ft-lbs



Grade Identification Marking for Metric-Grade 8.8 Bolt



Grade Identification Marking for Metric-Grade 10.9 Bolt

Diameter (mm)	Metric Class 8.8			Diameter (mm)	Metric Class 10.9		
	Clamp Loads (Pounds)	Tightening Torque			Clamp Loads (Pounds)	Tightening Torque	
		“Lubricated”	“Dry”			“Lubricated”	“Dry”
5	1,389	3 ft-lbs	5 ft-lbs	5	1,987	5 ft-lbs	7 ft-lbs
6	1,965	6 ft-lbs	8 ft-lbs	6	2,812	8 ft-lbs	11 ft-lbs
7	2,826	10 ft-lbs	13 ft-lbs	7	4,044	14 ft-lbs	19 ft-lbs
8	3,579	14 ft-lbs	19 ft-lbs	8	5,121	20 ft-lbs	27 ft-lbs
10	5,672	28 ft-lbs	37 ft-lbs	10	8,116	40 ft-lbs	53 ft-lbs
12	8,243	49 ft-lbs	65 ft-lbs	12	11,796	70 ft-lbs	92 ft-lbs
14	11,246	77 ft-lbs	103 ft-lbs	14	16,092	111 ft-lbs	148 ft-lbs
16	15,882	125 ft-lbs	167 ft-lbs	16	21,970	173 ft-lbs	231 ft-lbs
18	19,423	172 ft-lbs	229 ft-lbs	18	26,868	238 ft-lbs	317 ft-lbs
20	24,784	244 ft-lbs	325 ft-lbs	20	34,284	338 ft-lbs	450 ft-lbs