



B35092

UNDERCARRIAGE KIT

European Toyota Hilux

Parts List and Installation Instructions

⚠ CAUTION

Read this document before installing the snowplow.

⚠ CAUTION

See your BLIZZARD® outlet/Web site for specific vehicle application recommendations before installation. The Undercarriage Selection Guide has specific vehicle and snowplow requirements.

SAFETY

SAFETY DEFINITIONS

WARNING

Indicates a potentially hazardous situation that, if not avoided, could result in death or serious personal injury.

CAUTION

Indicates a potentially hazardous situation that, if not avoided, may result in minor or moderate injury. It may also be used to alert against unsafe practices.

NOTE: Indicates a situation or action that can lead to damage to your snowplow and vehicle or other property. Other useful information can also be described.

SAFETY PRECAUTIONS

Improper installation and operation could cause personal injury, and/or equipment and property damage. Read and understand labels and the Owner's Manual before installing, operating or making adjustments.

WARNING

Lower blade when vehicle is parked. Temperature changes could change hydraulic pressure, causing the blade to drop unexpectedly or damaging hydraulic components. Failure to do this could result in serious personal injury.

WARNING

The driver shall keep bystanders clear of the blade when it is being raised, lowered or angled. Do not stand between the vehicle and the blade or within 8 feet of a moving blade. A moving or falling blade could cause personal injury.

WARNING

Keep hands and feet clear of the blade and A-frame when mounting or dismounting the snowplow. Moving or falling assemblies could cause personal injury.

WARNING

Do not exceed GVWR or GAWR including the blade and ballast. The rating label is found on the driver-side vehicle door cornerpost.

WARNING

To prevent accidental movement of the blade, always turn the ON/OFF switch to OFF whenever the snowplow is not in use. The control indicator light will turn off.

WARNING

Remove blade assembly before placing vehicle on hoist.

SAFETY

CAUTION

Refer to the Undercarriage Selection Guide for minimum vehicle recommendations and ballast requirements.

PERSONAL SAFETY

- Remove ignition key and put the vehicle in park or in gear to prevent others from starting the vehicle during installation or service.
- Wear only snug-fitting clothing while working on your vehicle or snowplow.
- Do not wear jewelry or a necktie, and secure long hair.
- Wear safety goggles to protect your eyes from battery acid, gasoline, dirt and dust.
- Avoid touching hot surfaces such as the engine, radiator, hoses and exhaust pipes.
- Always have a fire extinguisher rated BC handy, for flammable liquids and electrical fires.

FIRE AND EXPLOSION

WARNING

Gasoline is highly flammable and gasoline vapor is explosive. Never smoke while working on vehicle. Keep all open flames away from gasoline tank and lines. Wipe up any spilled gasoline immediately.

Be careful when using gasoline. Do not use gasoline to clean parts. Store only in approved containers away from sources of heat or flame.

VENTILATION

WARNING

Vehicle exhaust contains lethal fumes. Breathing these fumes, even in low concentrations, can cause death. Never operate a vehicle in an enclosed area without venting exhaust to the outside.

TORQUE SPECIFICATIONS

TORQUE CHART

⚠ CAUTION

Read instructions before assembling. Fasteners should be finger tight until instructed to tighten according to the torque chart. Use standard methods and practices when attaching snowplow including proper personal protective safety equipment.



Grade Identification for J429–Grade 5 Bolt

SAE J429 Grade 5 Torque Values			
Nominal Thread Size	Clamp Loads (lb)	Tightening Torque	
		"Lubricated"	"Dry"
1/4-20	2,000	6 ft-lb	8 ft-lb
5/16-18	3,350	13 ft-lb	18 ft-lb
3/8-16	4,950	23 ft-lb	31 ft-lb
7/16-14	6,800	37 ft-lb	50 ft-lb
1/2-13	9,050	57 ft-lb	75 ft-lb
9/16-12	11,600	82 ft-lb	109 ft-lb
5/8-11	14,500	113 ft-lb	151 ft-lb
3/4-10	21,300	200 ft-lb	266 ft-lb
7/8-9	29,435	321 ft-lb	430 ft-lb
1-8	38,600	482 ft-lb	640 ft-lb



Grade Identification for J429–Grade 8 Bolt

SAE J429 Grade 8 Torque Values			
Nominal Thread Size	Clamp Loads (lb)	Tightening Torque	
		"Lubricated"	"Dry"
1/4-20	2,850	9 ft-lb	12 ft-lb
5/16-18	4,700	18 ft-lb	25 ft-lb
3/8-16	6,950	32 ft-lb	44 ft-lb
7/16-14	9,600	53 ft-lb	70 ft-lb
1/2-13	12,800	80 ft-lb	107 ft-lb
9/16-12	16,400	115 ft-lb	154 ft-lb
5/8-11	20,300	159 ft-lb	211 ft-lb
3/4-10	30,100	282 ft-lb	376 ft-lb
7/8-9	41,550	454 ft-lb	606 ft-lb
1-8	54,540	680 ft-lb	900 ft-lb



Grade Identification for Metric–Grade 8.8 Bolt

Metric Class 8.8 Torque Values			
Diameter (mm)	Clamp Loads (lb)	Tightening Torque	
		"Lubricated"	"Dry"
5	1,389	3 ft-lb	5 ft-lb
6	1,965	6 ft-lb	8 ft-lb
7	2,826	10 ft-lb	13 ft-lb
8	3,579	14 ft-lb	19 ft-lb
10	5,672	28 ft-lb	37 ft-lb
12	8,243	49 ft-lb	65 ft-lb
14	11,246	77 ft-lb	103 ft-lb
16	15,882	125 ft-lb	167 ft-lb
18	19,423	172 ft-lb	229 ft-lb
20	24,784	244 ft-lb	325 ft-lb



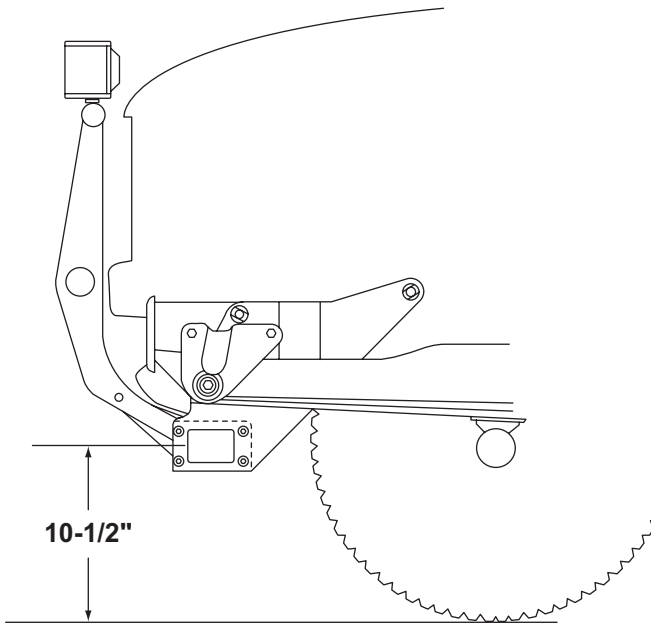
Grade Identification for Metric–Grade 10.9 Bolt

Metric Class 10.9 Torque Values			
Diameter (mm)	Clamp Loads (lb)	Tightening Torque	
		"Lubricated"	"Dry"
5	1,987	5 ft-lb	7 ft-lb
6	2,812	8 ft-lb	11 ft-lb
7	4,044	14 ft-lb	19 ft-lb
8	5,121	20 ft-lb	27 ft-lb
10	8,116	40 ft-lb	53 ft-lb
12	11,796	70 ft-lb	92 ft-lb
14	16,092	111 ft-lb	148 ft-lb
16	21,970	173 ft-lb	231 ft-lb
18	26,868	238 ft-lb	317 ft-lb
20	34,284	338 ft-lb	450 ft-lb

PUSHBEAM

PUSHBEAM HEIGHT

The recommended pushbeam height for this undercarriage assembly is 10-1/2" from the center of the pushbeam to level ground. DO NOT exceed 12-1/2" in height for this undercarriage.



UNDERCARRIAGE INSTALLATION

NOTE: For easier assembly and installation, vehicle and all snowplow components should be on a smooth, level, hard surface, such as concrete.

NOTE: Actual placement to be determined by installer based on recommended pushbeam height.

1. Position each hanger plate (**Item 6 and 7**) on the truck frame rail and secure rear holes with cap screws (**Item 16**) and washers (**Item 14**).

NOTE: Each hole contains a welded nut on the inside of the frame.

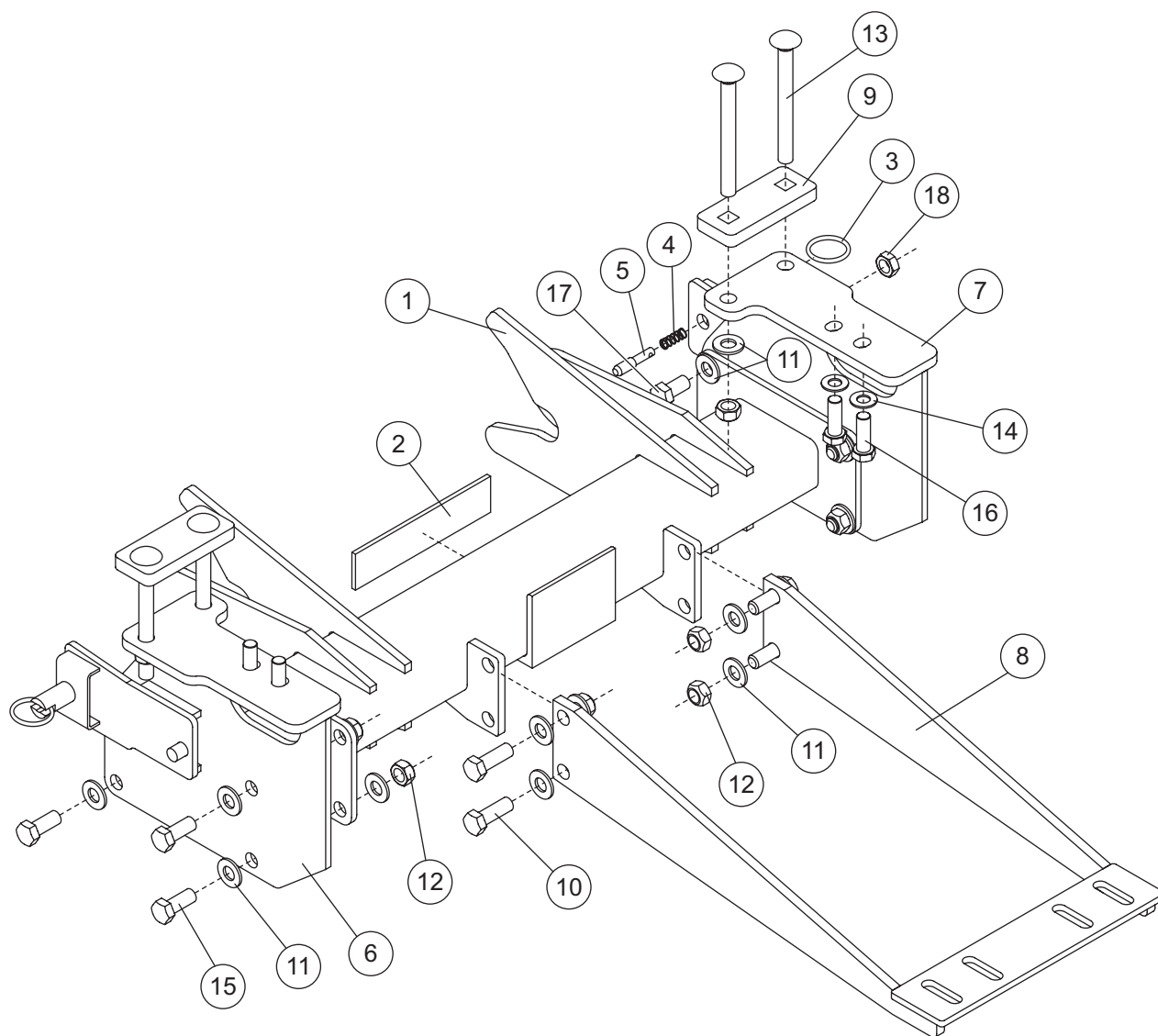
Finger tighten the fasteners until all undercarriage parts are in place.

2. Place support plates (**Item 9**) on top of frame and secure front holes into top of hanger plates with carriage bolts (**Item 13**), washers (**Item 11**) and locknuts (**Item 12**).

3. Mount the pushbeam (**Item 1**) square with the bottom of each hanger plate and secure both back and bottom front holes with cap screws (**Item 15**), washers (**Item 11**) and locknuts (**Item 12**). The top, front hole in the hanger plates will require cap screws (**Item 17**), washers (**Item 11**) and locknuts (**Item 18**). Tighten the pushbeam hardware according to the torque chart.
4. Secure the rear support arm (**Item 8**) to the cross member and then attach to the pushbeam with cap screws (**Item 10**), washers (**Item 11**) and locknuts (**Item 12**).
5. Level the pushbeam with the floor and tighten the hanger plate hardware according to the torque chart.

NOTE: After five to ten hours of snowplow usage, retorque all undercarriage assembly fasteners.

UNDERCARRIAGE PARTS LIST



B35092 Undercarriage Kit							
Item	Part	Qty	Description	Item	Part	Qty	Description
1	B35094	1	Pushbeam	6	B35093	1	Hanger Plate – DS
2	B63162	1	Decal, Pushbeam	7	B35095	1	Hanger Plate – PS
3	B61309	2	Split Ring, 1.25 OD	8	B35100	1	Pushbeam Support Arm
4	B61000	2	Compression Spring SS	ns	B61636	1	Hardware Kit
5	B40079	2	A-Frame Latch Pin				
B61636 Hardware Kit							
9	B35022	2	Hanger Plate Support	14	29232	4	7/16 Hardened Flat Washer
10	90210	4	1/2-13 x 1-1/2 Hex Cap Screw G5	15	90665	6	1/2-13 x 1-1/4 Hex Cap Screw G8
11	90572	26	1/2 Hardened Flat Washer	16	B61467	4	M12 x 1.25 x 35 Hex Cap Screw
12	90593	14	1/2-13 Hex Locknut GC	17	90098	2	1/2-13 x 1 Hex Cap Screw G5
13	90253	4	1/2-13 x 5 Carriage Bolt G5	18	63333	2	1/2-13 Hex Locknut GB
			G = Grade				SS = Stainless Steel
							ns = not shown



Blizzard
P.O. Box 245038
Milwaukee, WI 53224-9538
www.blizzardplows.com

 A DIVISION OF DOUGLAS DYNAMICS, L.L.C.

Copyright © 2008 Douglas Dynamics, L.L.C. All rights reserved. This material may not be reproduced or copied, in whole or in part, in any printed, mechanical, electronic, film or other distribution and storage media, without the written consent of Blizzard. Authorization to photocopy items for internal or personal use by Blizzard outlets or snowplow owner is granted.

Blizzard reserves the right under its product improvement policy to change construction or design details and furnish equipment when so altered without reference to illustrations or specifications used. Blizzard or the vehicle manufacturer may require or recommend optional equipment for snow removal. Do not exceed vehicle ratings with a snowplow. Blizzard offers a limited warranty for all snowplows and accessories. See separately printed page for this important information. The following is a registered (®) trademark of Douglas Dynamics, L.L.C.: BLIZZARD®.

Printed in U.S.A.